

42

AMERICAN

art

PREVIEWS OF WORKS FOR SALE AT
UPCOMING SHOWS COAST TO COAST

APRIL 2009

SPECIAL
SCULPTURE SECTION



COLLECTOR



\$6.95



0 74470 02541 2

UPCOMING SHOW

Up to 15 works on show
April 11-May 6, 2009
Alpha Gallery
38 Newbury Street
Boston, MA 02116
(617) 536-4465

• SHOW LOCATION BOSTON, MA

SCOTT PRIOR

Visual symphony

Scott Prior spends a lot of time in his home, especially around the kitchen sink and the glorious views he sees everyday out of the windows above it. Every time he enters the room, he visualizes a new painting based on the objects he sees, the flowers he places there from his own garden, the way the light comes through and hits these objects and the way the light distorts and influences the environment, which serves as a backdrop for the playing out of this daily drama.

"I've been doing it for a long time, and it is a window sill that just seems to collect stuff," says Prior. "The first inspiration for these works, though, is that this is my life, these are my things. I don't need to leave home. It's all right there."

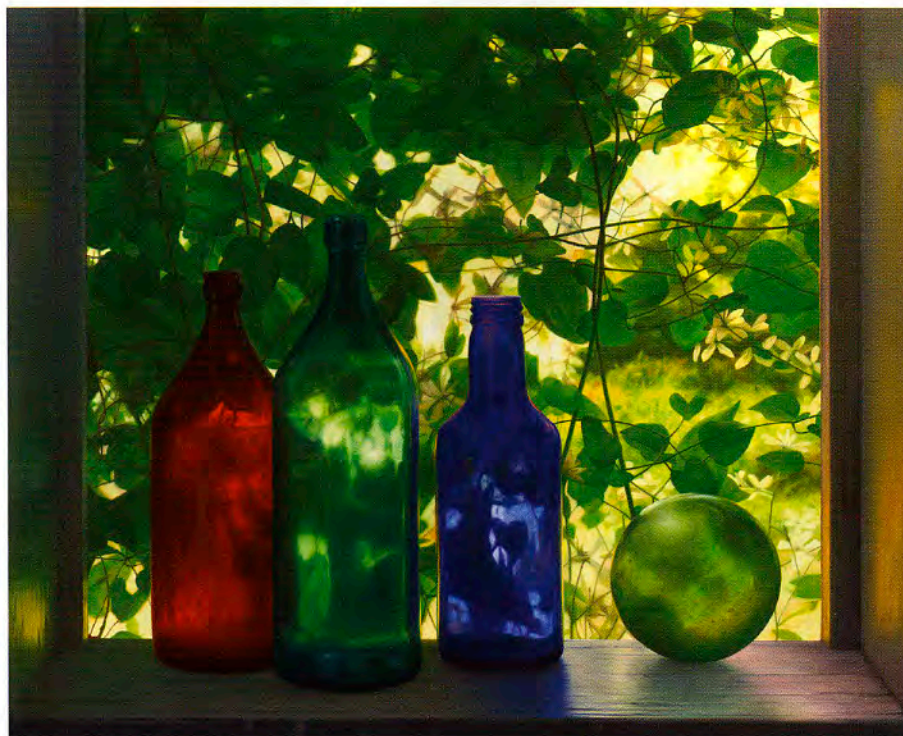
Prior's still lifes are a delicate balance between various compositional and

technical elements. Things like the world outside the window, the objects on the window sill, the light hitting these objects, the shadows that come from these effects, the objects and their relationship to one another, the sink itself—Prior, the composer of this visual symphony, brings all of these aspects together to create a harmonious whole.

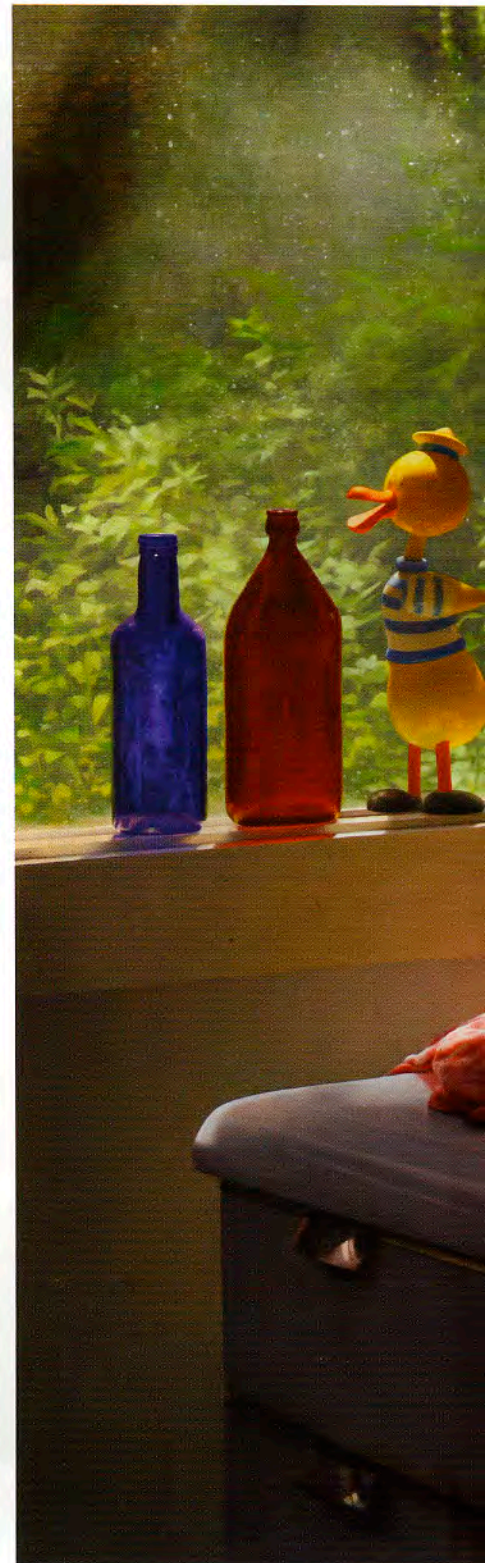
"It's just a collection of things that are already there," says Prior. "The flowers I picked in the back yard. Then, I rearrange everything at times for compositional purposes."

Of course, for an artist like Prior, the paintings are continually and emphatically always about the light.

"I'm always watching it," says Prior. "During the course of the day and the course of a year the light is always different.



BOTTLES IN SUMMER CABIN WINDOW, OIL ON PANEL, 22 X 27"





SUMMER CABIN KITCHEN, OIL ON PANEL, 32 X 42"



WINDOW IN JUNE, OIL ON PANEL, 36 X 60"

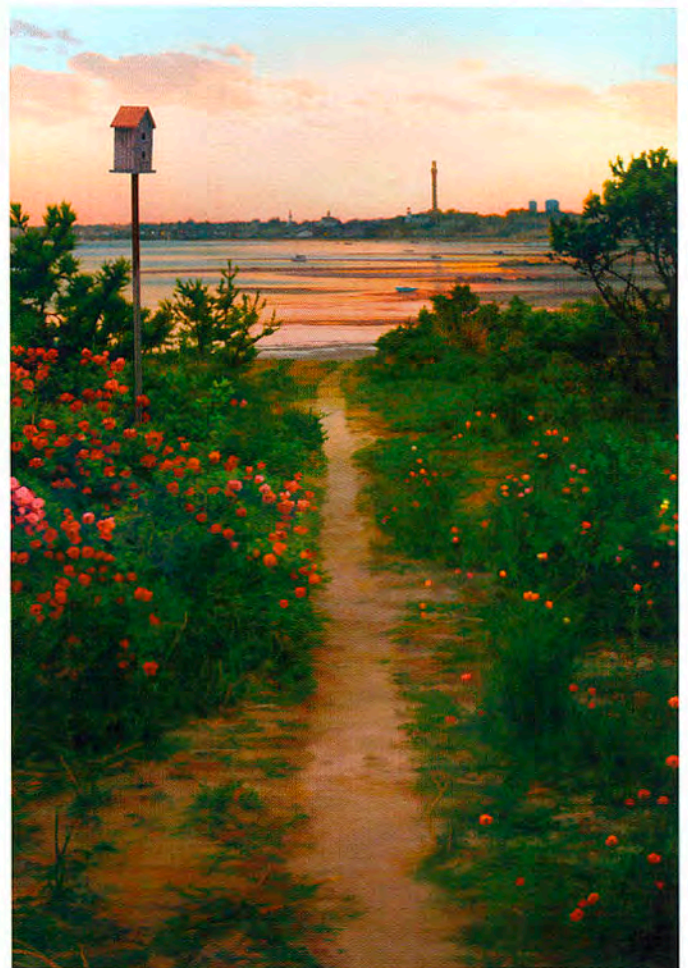


SCOTT PRIOR IN HIS HOME, WHICH OFTEN SERVES AS HIS MUSE.

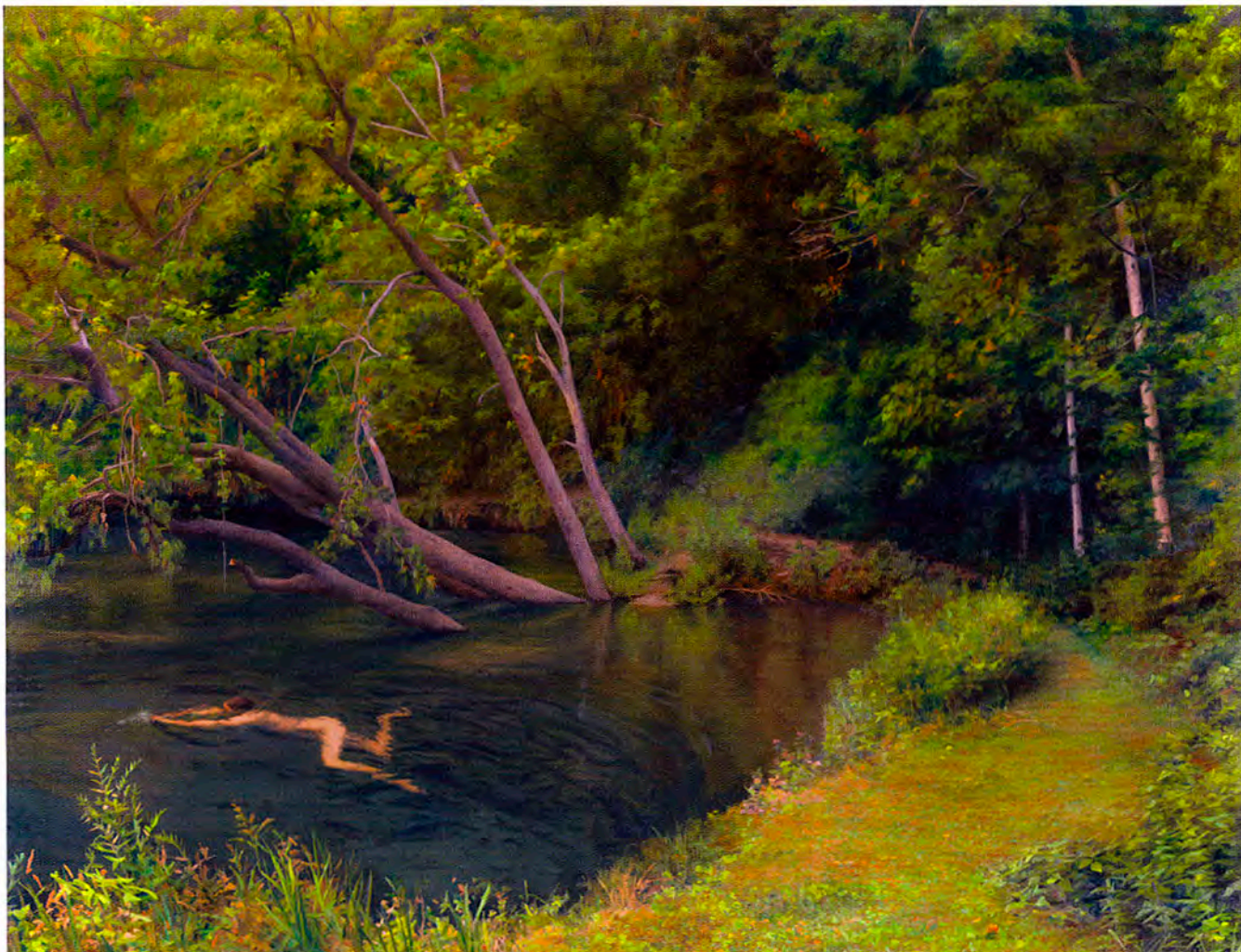
The Gallery Says . . .

"Scott is a master at using light in an emotive way. Whether depicting the golden light of a summer morning, or the cool light of an overcast winter day, he is able to distill the visual experience into a deeply felt moment."

— Joanna Fink, Director, Alpha Gallery



PATH TO THE BEACH, OIL ON PANEL, 28 X 20"



THE SWIMMER, OIL ON PANEL, 32 X 30"

It has proven to create a wealth of material for me. Light is always a major subject in my paintings; various kinds of light, and I enjoy how they each come in at different ways, hit things, go through things, bounce off things. It's all about the various effects that light can create, and I like to pull out all the stops when painting this."

Another important aspect of these paintings is the landscape that can be seen through the window. Prior enjoys switching back and forth in style when it comes to this part of the painting, from a more abstracted to a more realistic approach.

"It used to be more literal and now I'm abstracting more and more," says Prior. "Sometimes it's a lot of foliage and light doesn't pass through very easily, and other times it's just the sky. But I've just decided to abstract the view out the window in order to call more attention to the objects."

Prior also uses the windows to create another contrast between the objects

being painted and this more organic background.

"It's a bit of a push and pull between the objects and what is outside," says Prior. "This time I've focused on the colors and the light inside, and the background is more passive, more of a set up for the foreground. Sometimes, though, the background is very prominent and the paintings have a whole different feel to them."

The differences in portraying this window space is emblematic of Prior's work as a whole. Working in a photorealistic style but not quite as comfortable with that label, Prior has always viewed his work as a battle between realism and light effects.

"In some of these paintings, if you take out the bottles, it's an abstract painting," says Prior. "I hope there is a level not of realism but of familiarity to the work. Light is a very hard thing to paint, and it's hard to paint light and realism at the same

time. There is something inherent in the effects of light that break down surfaces, like the Impressionists dealt with, and that is something I've been challenged with for decades." ●

For a direct link to the exhibiting gallery go to

www.americanartcollector.com



Price Range Indicator

Our at-a-glance Price Range Indicator shows what you can expect to pay for this artist's work.

	Small	Medium	Large
2000	\$3,000	\$10,000	\$30,000
2005	\$4,000	\$15,000	\$35,000
2009	\$4,500	\$24,000	\$40,000